

# Pediatric Anthropomorphic Training Phantoms

## Model Series 715



### SPoRT™ Sectional Pediatric Radiography Trainer

Available with common pediatric fractures and flexed appendages

An ideal addition to any imaging department or Radiologic Technology training program, the CIRS Model 715 Series can assist in the monitoring, training and improvement of parameters and protocols common to most pediatric imaging procedures.

SPoRT™ is designed to aid teaching and improvement of patient positioning, collimation and anatomical comprehension and its wide range of features facilitate effective instruction of safe, high quality, pediatric imaging.

The phantom represents a typical 5-year old in both size and structure, making it portable and easy to position. The full body with head, arms and legs measures 110 cm (43 in) tall and weighs 20 kg (44 lb). The series consists of six sectional phantoms available separately or as a complete set.

Right extremities are available in extended or flexed configurations. Left arm and leg are available with or without embedded fractures. The fracture versions contain the most common pediatric fracture types, including buckle fracture to tibia and common fracture to fibula; fracture

to first metatarsal; radius fracture with open reduction and hardware and a common fracture to second intermediate phalanx.

Components are made from propriety urethane and epoxy materials that mimic X-ray attenuation properties of human tissues for both diagnostic and therapy energy ranges (50 keV – 25 MeV). The materials are durable, impact resistant and suitable for continuous handling. Transparent soft tissue facilitates visual instruction of anatomical landmarks.

SPoRT™ can be used in film radiography, CR, DR and Computed Tomography.

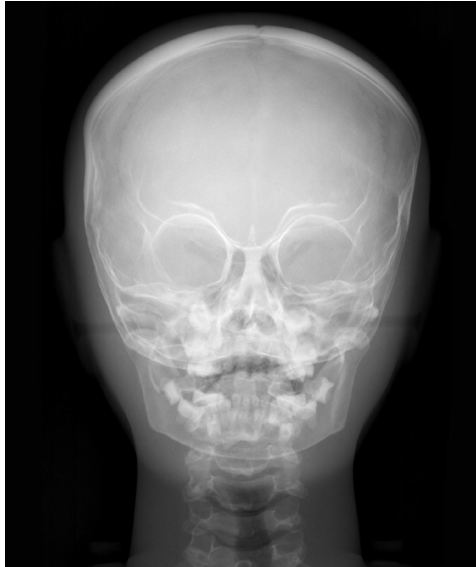


# CIRS

# A New Standard for Anatomical Comprehension, Instruction and Training

## Features

- Deciduous and descending teeth with distinct dentine and enamel
  - Fully open sinus cavities
  - Anthropomorphic lung structure and vasculature
  - Bones contain cortical/trabecular distinction, growth plates and ossifications typical to a 5-year old
  - Certain bones of the spine and pelvis are atypical to a healthy 5-year old.
- The bones are modeled from human samples that include various anomalies
- Translucent soft tissue to enable visualization of bony anatomy
  - Five most common fractures present in left extremities
  - Additional fractures or pathologies can be custom manufactured upon request
  - Optional large positioning stand and carry case available



AP Skull



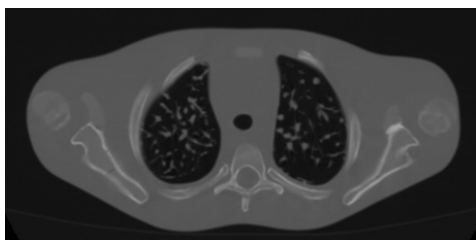
3D Reconstruction



Lateral Skull



Lateral Lumbar Spine



## Benefits

- Facilitates hands on training and feedback in an exciting and memorable way
- Demonstrates the need for specialized views with certain pathologies
- Allows for effective demonstration of changes in techniques
- Promotes sensitivity and proficiency in patient handling and positioning
- Effectively evaluate trainee performance

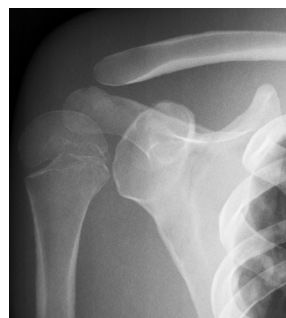
# Sectional Pediatric Phantoms Facilitate Realistic and Safe Imaging



AP Chest



AP Pelvis



AP Shoulder



AP Forearm



Left Oblique Hand



Right Oblique Hand



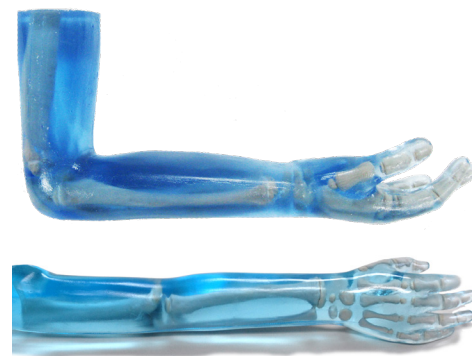
AP Ankle



Oblique Ankle



# Specifications



PART NO.	DESCRIPTION	INCLUDES	WEIGHT	DIMENSIONS
715-HN	Head	Skull, Homogeneous Brain, Sinus, Cavities, Ear Canals, C1-C7 Spine, Spinal Disks, Deciduous and Descending Teeth with enamel and dentin, Small positioning stand for use with head only	2.75 kg	21 cm H x 14 cm W x 17 cm D
715-T	Trunk	Chest, Rib Cage, Spine, Spinal Disks, Lungs, Bronchial Tree to third bifurcation, Lung Vasculature, Trachea, Scapula, Clavicles, Top Third of Humerus, Pelvis, Top Third of Femur	9.85 kg	44.5 cm H x 24 cm W x 14 cm D
715-A-R	Right Arm	Elbow in natural position, Full bone structure, Oblique hand position	0.7 kg	37 cm L x 8 cm W x 7cm D
715-A-R-90	Right Arm Flexed 90 Degrees	Elbow flexed 90 degrees, Full bone structure, Oblique hand position	0.7 kg	32 cm L x 8 cm W x 13 cm D
715-A-L	Left Arm	Elbow in natural position, Full bone structure, Natural hand position	0.7 kg	37 cm L x 9 cm W x 5 cm D
715-A-L-FX	Left Arm with Fractures	Elbow in natural position, Full bone structure, Natural hand position, Radius fracture with open reduction and hardware, Common fracture to second intermediate phalange	0.7 kg	37 cm L x 9 cm W x 5 cm D
715-L-R	Right Leg	Knee in natural position, Full bone structure, Relaxed foot position	2.50 kg	42.5 cm L x 9 cm W x 18 cm D
715-L-R-90	Right Leg Flexed 90 Degrees	Knee flexed 90 degrees, Full bone structure, Relaxed foot position	2.50 kg	34 cm Lx 9 cm W x 19 cm D
715-L-L	Left Leg	Knee in natural position, Full bone structure, Plantar foot flexion	2.50 kg	51.5 cm L x 9 cm W x 18 cm D
715-L-L-FX	Left Leg with Fractures	Knee in natural position, Full bone structure, Plantar foot flexion Buckle fracture to tibia and common fracture to fibula; Fracture to first metatarsal	2.50 kg	51.5 cm L x 9 cm W x 18 cm D



## Model 9508/ 9508A

Custom carrying cases are available when purchasing the entire SPoRT system and large positioning stand, with flexed appendages (Model 9508A) and without flexed appendages (Model 9508).



## Model 715-S-1

Large Positioning Stand allows for easy positioning of the head, torso and all appendages.

## SPoRT Kits

Kits offer a complete, cost-effective solution for purchasing multiple sections of the SPoRT phantom.

PART NO.	DESCRIPTION	INCLUDES
715-35A	SPoRT Kit, Advanced Features	(1) each of 715-HN; 715-T; 715-A-L-FX; 715-A-R-90; 715-L-L-FX; 715-L-R-90; 715-S-1; 9508A
715-35	SPoRT Kit, Standard	(1) each of 715-HN; 715-T; 715-A-L; 715-A-R; 715-L-L; 715-L-R; 715-S-1; 9508

## Optional Accessories

PART NO.	DESCRIPTION
715-S-1	Large positioning stand for head, torso and appendages. Includes positioning stand, "HEAD" and "TRUNK" base/ quick-release plates, (2) long thumb screws, (2) short thumb screws, (4) unattached quick-release plates, and Allen wrench.
9508	Accommodates (1) each of 715-HN, 715-T, 715-A-L, 715-A-R, 715-L-L, 715-L-R, 715-S-1
9508A	Accommodates (1) each of 715-HN, 715-T, 715-A-L-FX, 715-A-R-90, 715-L-L-FX, 715-L-R-90, 715-S-1
038-20	SRS Frame Support Cups, Set of 4 (Compatible with 715-HN)

