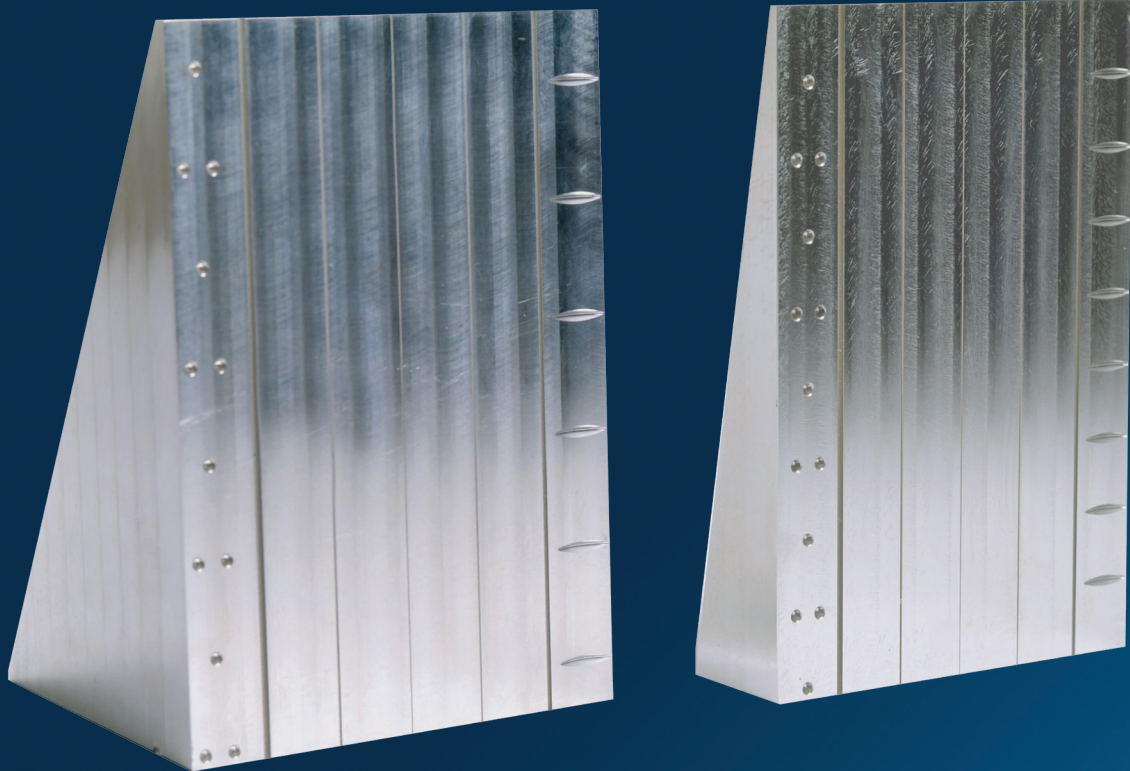


# DR PHANTOM

**5-Groove Wedge and DR Phantom  
according to ASTM E2737**



**Performance Evaluation and Long-Term-Stability Test  
for DDA systems according to latest standards and  
specifications**

# Digital Detector Array Performance Evaluation and Long-Term-Stability Tests

The standard ASTM E2737 describes the evaluation of DDA systems for industrial radiology. It is intended to ensure that the evaluation of image quality, as far as this is influenced by the DDA system, meets the needs of users, and their customers, and enables process control and long term stability of the DDA systems.

These tests are to monitor the system performance for degradation and to identify when action needs to be taken if the system degrades by a certain level – i.e. influenced after repairs, hardware-/ software upgrades.

## 5-Groove Wedge

Simple to set-up and use universal test wedge according to ASTM E2737 - available in two versions. Selection shall base on the most stringent material used in the application.



5-Groove Wedge  
Heavy Metal  
made of stainless steel

**Article no. 11 00170**



5-Groove Wedge  
Light Metal  
made of aluminum

**Article no. 11 00171**

## DR Phantoms

These DR Phantoms are designed for special applications, but also proposed for monitoring DDA performance.

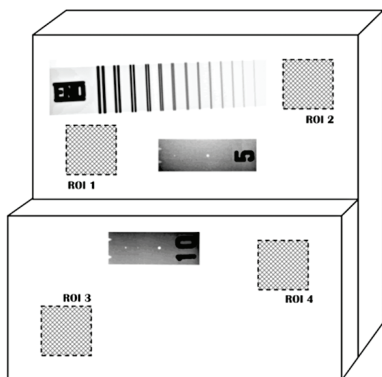
### Duplex Plate Phantom

Described in ASTM E2737,  
but also for special inspection set-up dimensions, only.

Two flat plates made of the material used in the application  
or of the most stringent material, and with the thickness  
suitable to the object to be inspected:

Bottom Plate

Top Plate, half size of Bottom Plate



Duplex Plate Phantom - set-up

Duplex Wire Type IQI - ASTM E2002/ ISO 19232-5

**Article no. 11 00155**

Hole Type Indicator - ASTM E1025 or E1742

**Article no. depending on size/ type**

### DR Phantom TAM – Aviation

Special design for Aerospace Industries –  
turbine blade inspection

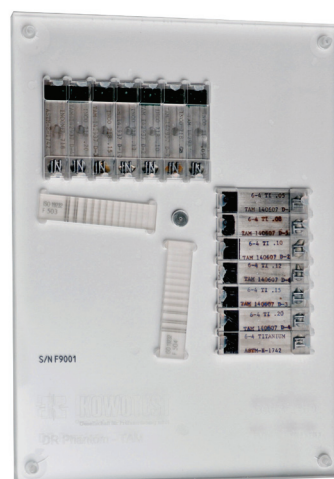
Step wedges with 7 steps – acc. to TAM ...

IQI plaques acc. to TAM .../ ASTM E1742

made of the material used in the application or of the most  
stringent material i.e. Titanium and Inconel

Duplex Wire Type IQI - ASTM E2002/ ISO 19232-5

BAM snail



DR Phantom TAM

**Article no. 11 00310**



Adapter Plate

**Article no. 11 00311**



Made in  
Germany



**KOWOTEST**

Gesellschaft für Prüfausrüstung mbH

Solinger Strasse 186  
D-40764 Langenfeld

Fon: +49 2173 - 223 83  
Fax: +49 2173 - 223 35

www.kowotest.de  
info@kowotest.de



深圳市净康科技有限公司  
Shenzhen JingKang Technology Co.LTD

深圳市净康科技有限公司

王小姐: 15813841944 QQ: 422612157

电话: 0755-28917660

地址: 深圳市龙岗区沙平北路111号吉茂大厦

6008网址: <http://www.3000buy.com>